

# PRODUCT INFORMATION PACKET



Model No: 122111.00  
Catalog No: 122111.00  
2 HP Close-Coupled Pump Motor, 3 phase, 3600 RPM, 230/460 V, 145JP Frame, TEFC  
JP Motors



Regal and Leeson are trademarks of Regal Beloit Corporation or one of its affiliated companies.  
©2020 Regal Beloit Corporation, All Rights Reserved. MC017097E





### Nameplate Specifications

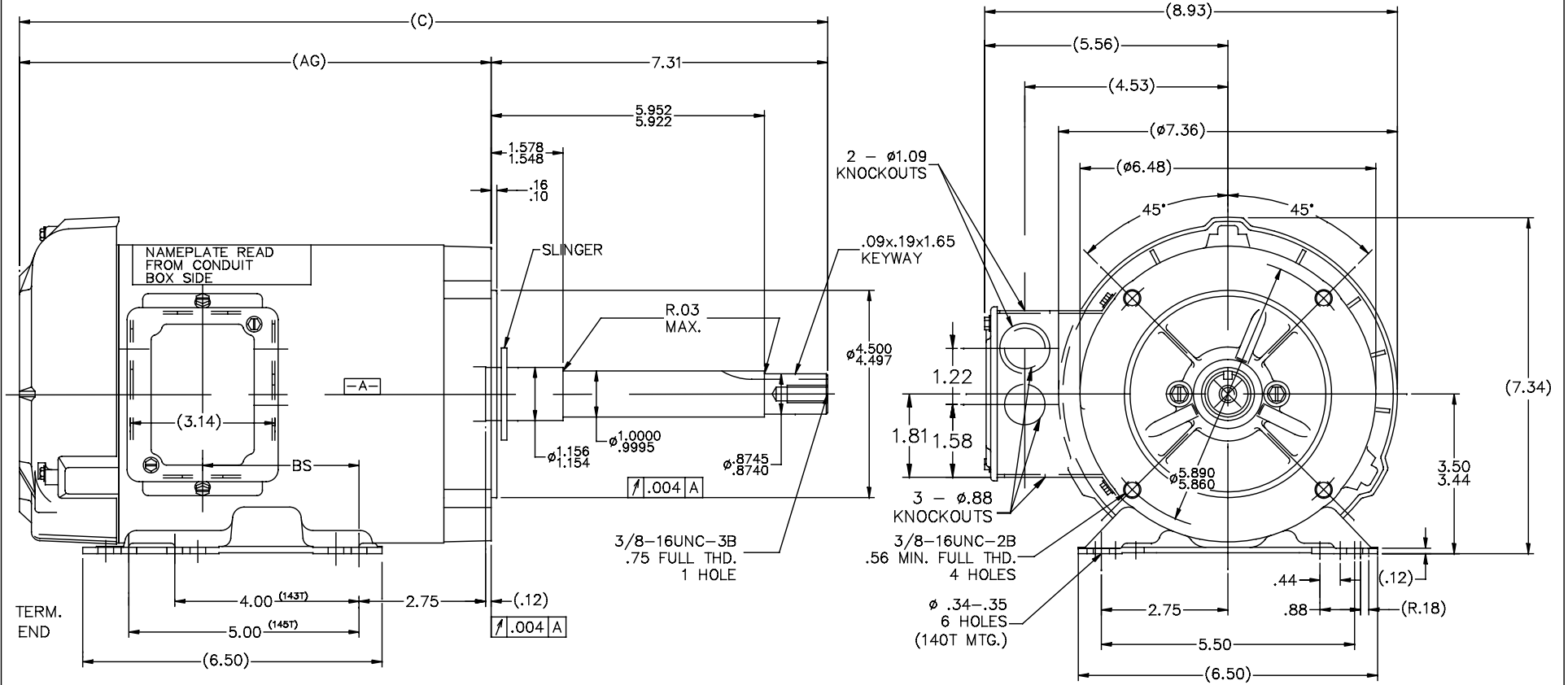
Output HP	2 Hp	Output KW	1.5 kW
Frequency	60 Hz	Voltage	230/460 V
Current	5.0/2.5 A	Speed	3500 rpm
Service Factor	1.15	Phase	3
Efficiency	85.5 %	Power Factor	86
Duty	Continuous	Insulation Class	F
Design Code	B	KVA Code	K
Frame	145JP	Enclosure	Totally Enclosed Fan Cooled
Thermal Protection	No	Ambient Temperature	40 °C
Drive End Bearing Size	6206	Opp Drive End Bearing Size	6203
UL	Recognized	CSA	Y
CE	Y	IP Code	43

### Technical Specifications

Electrical Type	Squirrel Cage Inverter Rated	Starting Method	Line Or Inverter
Poles	2	Rotation	Reversible
Resistance Main	7.1 Ohms	Mounting	Rigid base
Motor Orientation	Horizontal Or Shaft Down	Drive End Bearing	Ball
Opp Drive End Bearing	Ball	Frame Material	Rolled Steel
Shaft Type	JP	Overall Length	19.63 in
Frame Length	9.06 in	Shaft Diameter	0.875 in
Shaft Extension	7.31 in	Assembly/Box Mounting	F1 ONLY
Connection Drawing	EE7308	Outline Drawing	100134-906

This is an uncontrolled document once printed or downloaded and is subject to change without notice. Date Created:14/10/2020

100134



DASH	C	AG	BS
706	17.63	10.32	3.44
756	18.13	10.82	3.94
806	18.63	11.32	4.44
856	19.13	11.82	4.94
906	19.63	12.32	5.44
956	20.13	12.82	5.94

NOTE:  
CONDUIT BOX CAN BE ROTATED 180°

TOLERANCES UNLESS SPECIFIED		REGAL™ Regal Beloit America, Inc.		DRAWN DT 05-30-96	
DEC.	INCHES	CHK	KL 06-06-96	APPD	ML 06-06-96
.X	±.1				
.XX	±.02				
.XXX	±.005	TITLE OUTLINE - TEFC		SCALE 5=9	
.XXXX	±.0005	140 FR. - 3 $\phi$ -BB -C'FACE -JP EXT.		REF	
NO.	REVISION	BY & DATE	CHK	ANG	±7'30"
8	CORRECTED 'C' DIM'S ON 27400-502	BLR 0-28-99			
7	REDRAWN ON CADD, REVISED 'AG' DIM.	DT 06-06-96			
			RFP		
			DIST WP		
THIS DRAWING IN DESIGN AND DETAIL IS OUR PROPERTY AND MUST NOT BE USED EXCEPT IN CONNECTION WITH OUR WORK. ALL RIGHTS OF DESIGN AND INVENTION ARE RESERVED. THIS IS AN ELECTRONICALLY GENERATED DOCUMENT - DO NOT SCALE THIS PRINT			CAD FILE 100134		SIZE B
			DRAWING NO. 100134		REV. 8



NO.	REVISION	BY & DATE	CHK	ANG	TOLERANCES UNLESS SPECIFIED		FINISH	DRAWN RM 11/20/1990				
					DEC.	INCHES						
5	CHG TO REGAL LOGO	SL 09/10/2015	AB					CHK ML 11/21/1990				
4	REVISED IEC NOTATIONS	MSG 11/15/2011	CMN	.X	±.1			APPD SAS 04/24/2003				
3	ADDED IEC NOTATIONS... (U1), (V1) ETC. MU95194	MSG 5/10/2010	MJS	.XX	±.02		TITLE CONNECTION DIAGRAM	SCALE 1=1				
2	ADDED THE OPTIONAL CORD CONNECTION MU46318	RDH 04/24/2003	DRS	.XXX	±.005		3Ø - DUAL VOLTAGE MOTOR	REF				
1	REDRAWN	RM 11/20/1990		.XXXX	±.0005		MAT'L.	FMF				
					±7'30"			PREV				
THIS DRAWING IN DESIGN AND DETAIL IS OUR PROPERTY AND MUST NOT BE USED EXCEPT IN CONNECTION WITH OUR WORK ALL RIGHTS OF DESIGN AND INVENTION ARE RESERVED THIS IS AN ELECTRONICALLY GENERATED DOCUMENT - DO NOT SCALE THIS PRINT							RFP	CAD FILE ee7308	SIZE A	DRAWING NO. EE7308	PAGE OF 5	REV. 5
							DIST WP					



1051 CHEYENNE AVE.  
 GRAFTON, WI 53024  
 PH. 262-277-8810

DATA VOLTS: 460

**CERTIFICATION DATA SHEET**

CONN. DIAGRAM: A-EE7308  
 OUTLINE: B-100134-906  
 WINDING: ZT2142

CAT #: 122111.00

FR 3

**TYPICAL MOTOR PERFORMANCE DATA**

HP	KW	SYNC RPM	FL RPM	FRAME	ENCLOSURE	TYPE	KVA CODE	DESIGN	
2	1.5	3600	3500	145Jpv	TEFC	TFR	K	B	
PH	HZ	VOLTS	AMPS	START TYPE	DUTY	INSL	S.F.	AMB	ELEV.
3	60/50	230/460#190/380	5/2.5&4.5/2.3	LINE OR INVERTER	CONT	F	1.15	40	3300
F.L. EFF	85.5	3/4 LD EFF	85.9	1/2 LD EFF	84.0	GTD EFF	84.0	ELECT. TYPE	SQ CAGE INV RATED
F.L. PF	86.0	3/4 LD PF	82.0	1/2 LD PF	72.5	84.0			

F.L. TORQUE	LR AMPS @ 460 V	L.R. TORQUE	317%	B.D. TORQUE	407%	F.L. RISE (° C)	36					
3.0 LB-FT	21.7	9.5 LB-FT		12.2 LB-FT		80 LB.						
PRESSURE @ 3	SOUND	POWER	ROTOR WK <sup>2</sup>	MAX. LOAD WK <sup>2</sup>	SAFE STALL TIME	STARTS/HOUR	MOTOR WGT					
69	dbA	78	dbA	0.07	LB-FT <sup>2</sup>	4	LB-FT <sup>2</sup>	20	SEC.	2	80	LB.

\*\*\* SUPPLEMENTAL INFORMATION \*\*\*

DE BRACKET TYPE	ODE BRACKET TYPE	MOUNT TYPE	MOTOR ORIENTATION	SEVERE DUTY	HAZARDOUS LOCATION	DRIP COVER	SCREENS	PAINT
C-FACE	STANDARD	RIGID	ZONIAL OR SHAFT D	NO	NONE	NO	NONE	WATTS/SAVER
BEARINGS	GREASE	SHAFT TYPE	SPECIAL DE	SPECIAL ODE	SHAFT	MATERIAL	FRAME MATERIAL	
DE ODE								
BALL BALL	POLYREX EM	JP	NONE	NONE	1144	STRESSPROOF (C-223)	ROLLED STEEL	
6206	6203							

THERMOSTATS	PROTECTORS	WDG RTD's	BRG RTD's	THERMISTORS	CONTROL	SPACE HEATERS
NONE	NOT	NONE	NONE	NONE	FALSE	NA
R1 (ohms/ph)	R2 (ohms/ph)	X1 (ohms/ph)	X2 (ohms/ph)	Xm (ohms/ph)	VIBRATION (in/sec)	FLOAT
4.402	3.124	6.532	5.538	208.74	0.150	ODE

* N O T E S *		INVERTER TORQUE: CONSTANT 2:1	
		INV. HP SPEED RANGE: NONE	
		ENCODER: NONE	
		BRAKE: NONE	
		FT-LB: N/A	
		VOLTAGE: NONE	
		UL: Y-(LEESON UL REC)	

DATE: 8/30/2018	UL: Y-(LEESON UL REC)
-----------------	-----------------------

Data Sheet

Date: 8/30/2018

122111.00



Data @ 460 V

Motor Load Data

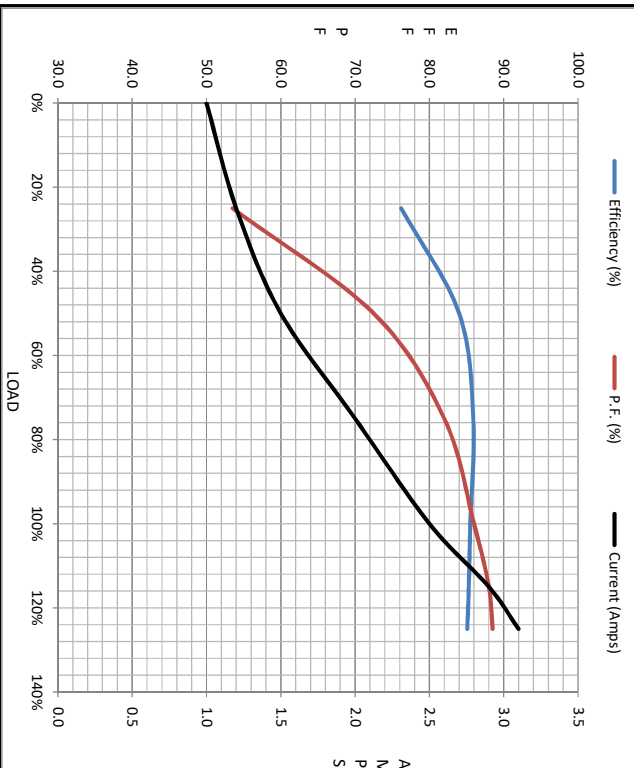
Load	0%	25%	50%	75%	100%	115%	125%	LR
Current (Amps)	1.00	1.20	1.50	2.00	2.50	2.90	3.1	21.7
Torque (ft-lb)	0.00	0.74	1.48	2.23	3.0	3.5	3.8	9.5
RPM	3600	3575	3550	3525	3500	3485	3470	0
P.F. (%)	20.0	53.5	72.5	84.0	85.9	85.3	85.1	42.0

Motor Speed Data

	LR	Pull-Up	BD	Rated	Idle
Speed (RPM)	0	1500	2615	3500	3600
Current (Amps)	21.7	20.5	14.5	2.50	1.00
Torque (ft-lb)	9.5	9.4	12.2	3.0	0.00

Information Block

HP	2.0			
Sync. RPM	3600			
Frame	145			
Enclosure	TEFC			
Construction	TTR			
Voltage	230/460#190/380 V			
Frequency	60 Hz			
Design	B			
LR Code letter	K			
Service Factor	1.15			
Temp Rise @ FL	36 °C			
Duty	CONT			
Ambient	40 °C			
Elevation	1,000 feet			
Rotor/Shaft wk <sup>2</sup>	0.07 Lb-Ft <sup>2</sup>			
Ref Wdg	ZT2142 FR			
Sound Pressure @ 1M	69 dBA			
VFD Rating	CONSTANT 2:1			
Outline Dwg	B-100134-906			
Conn. Diag	A-EET308			
Additional Specifications:				
0				
0				
EQUIV CKT (OHMS / PHASE)				
R1	R2	X1	X2	Xm
4.4020	3.1240	6.5320	5.5380	208/7400



Speed - Torque Curve

